

SFEIR CENTER / BYBLOS 2347

LUXURY RESIDENTIAL / COMMERCIAL PROJECT



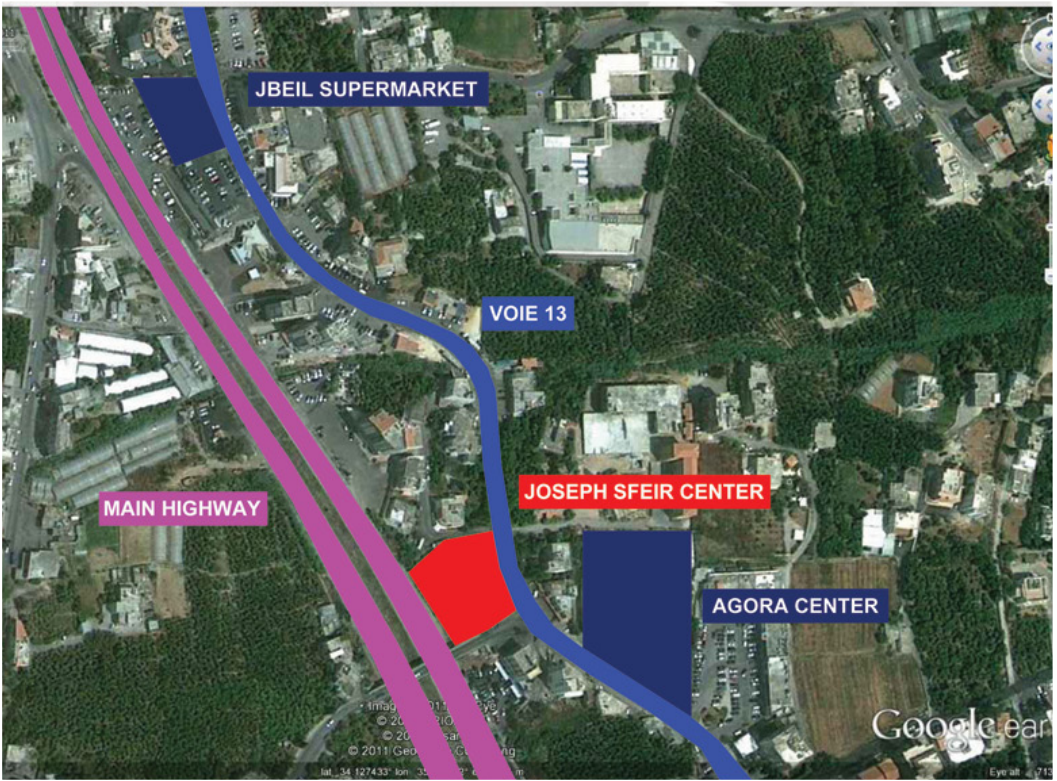
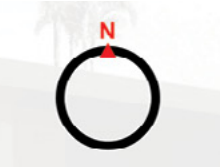
PROJECT BY



JEAN EL KHOURY
DEVELOPMENT



PROJECT LOCATION



OVERALL

SOUTH EAST
PERSPECTIVE



FACADE
EAST PERSPECTIVE



OVERALL

SOUTH WEST
PERSPECTIVE



OVERALL

SOUTH WEST
PERSPECTIVE



FACADE
WEST PERSPECTIVE



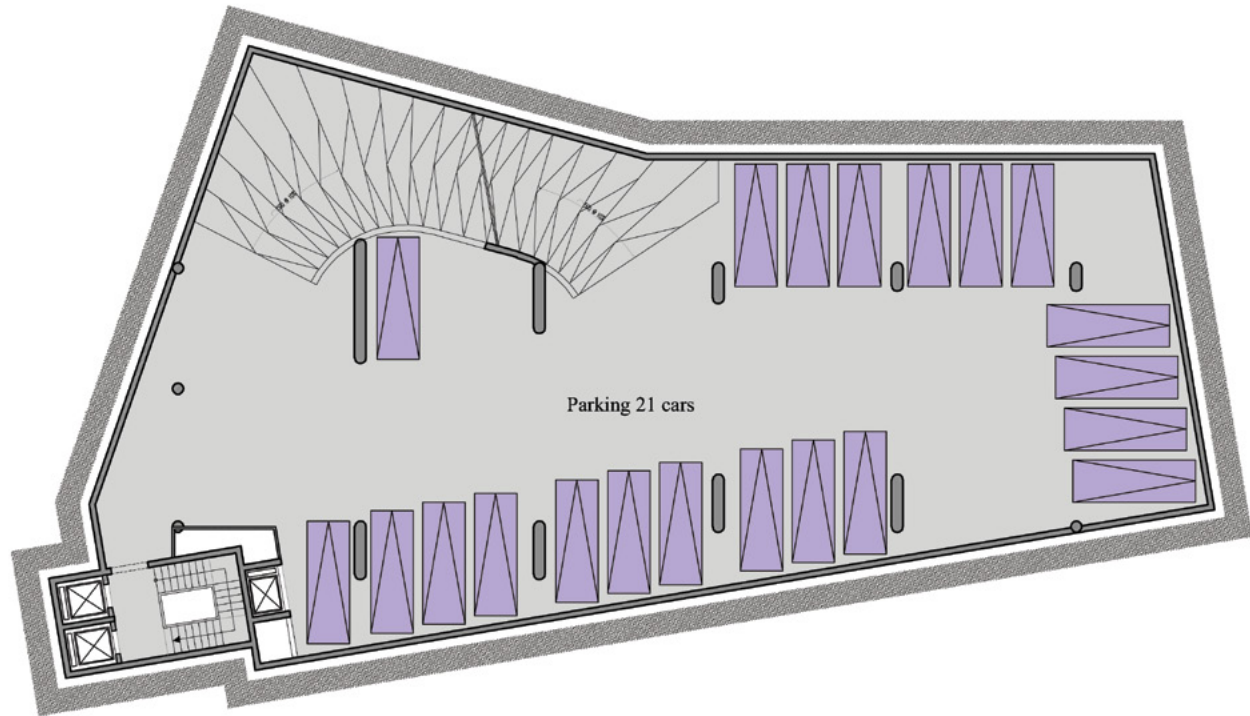
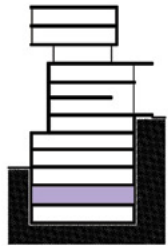
PARKING LOT

SIXTH BASEMENT



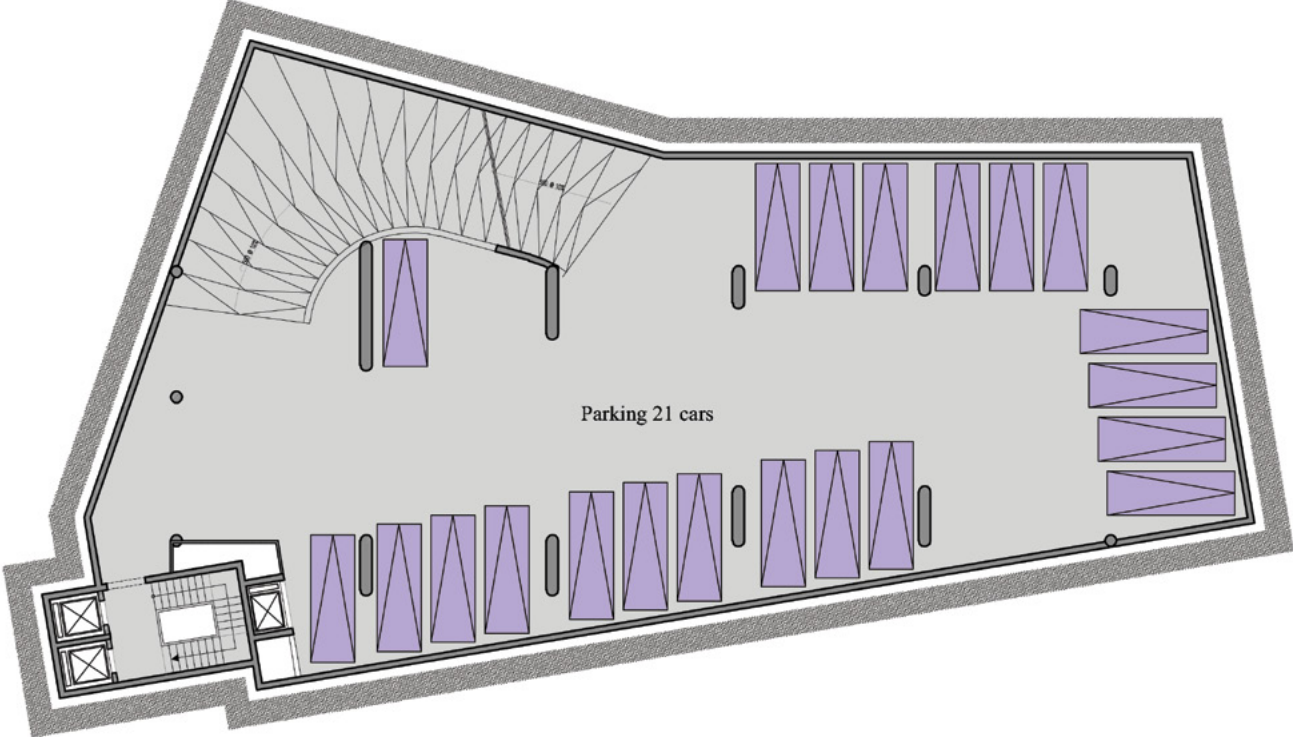
PARKING LOT

FIFTH BASEMENT



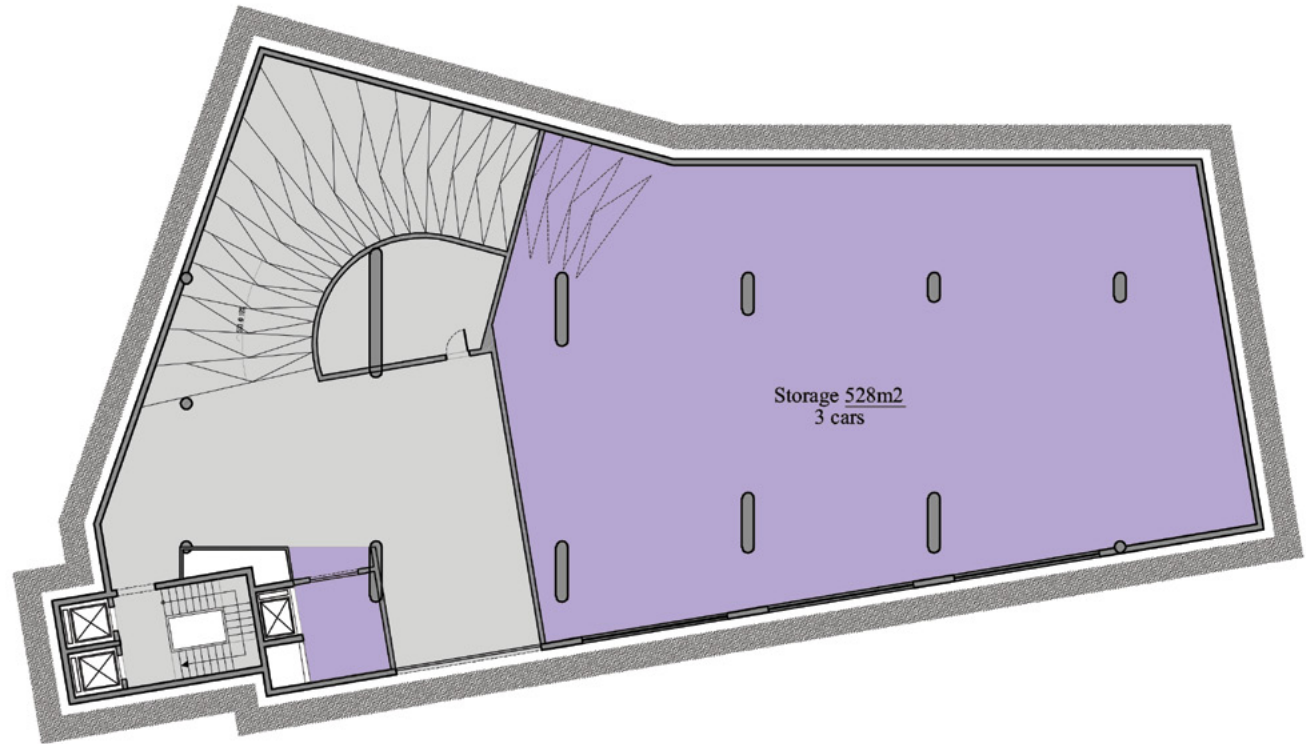
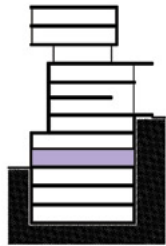
PARKING LOT

FOURTH BASEMENT



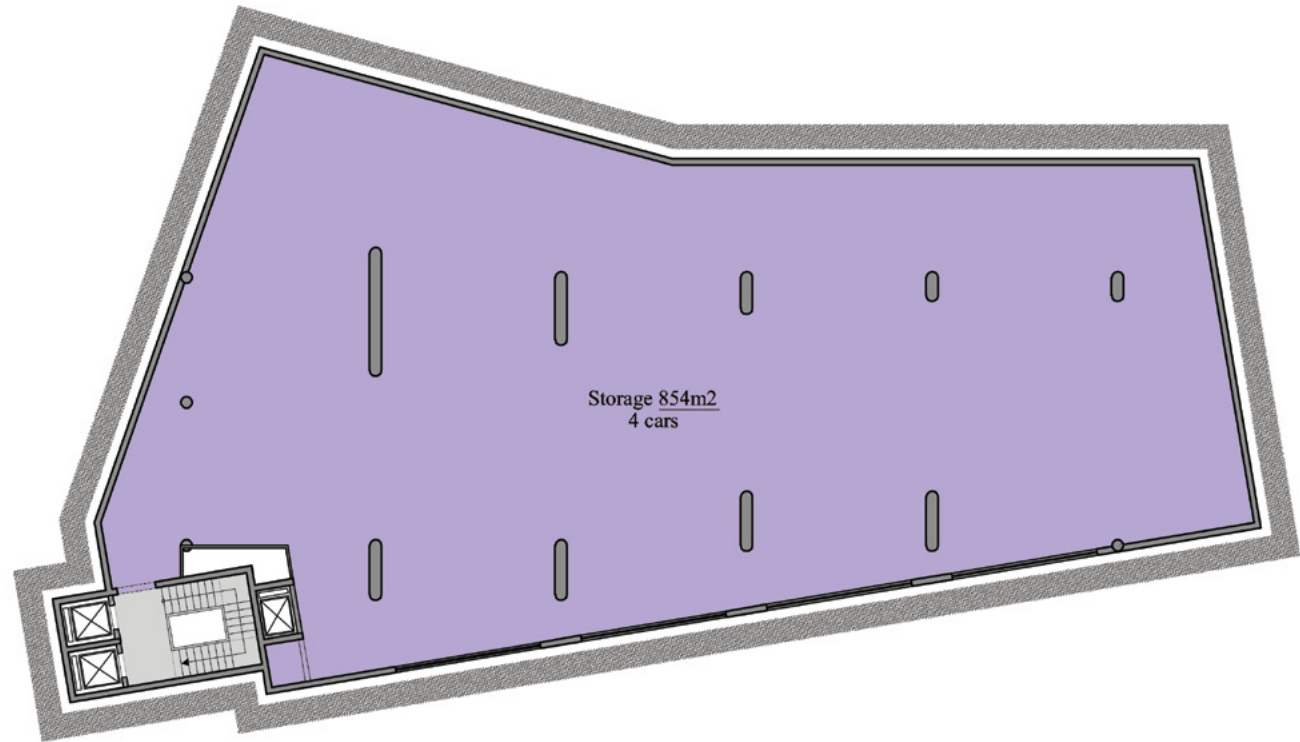
WAREHOUSE

THIRD BASEMENT



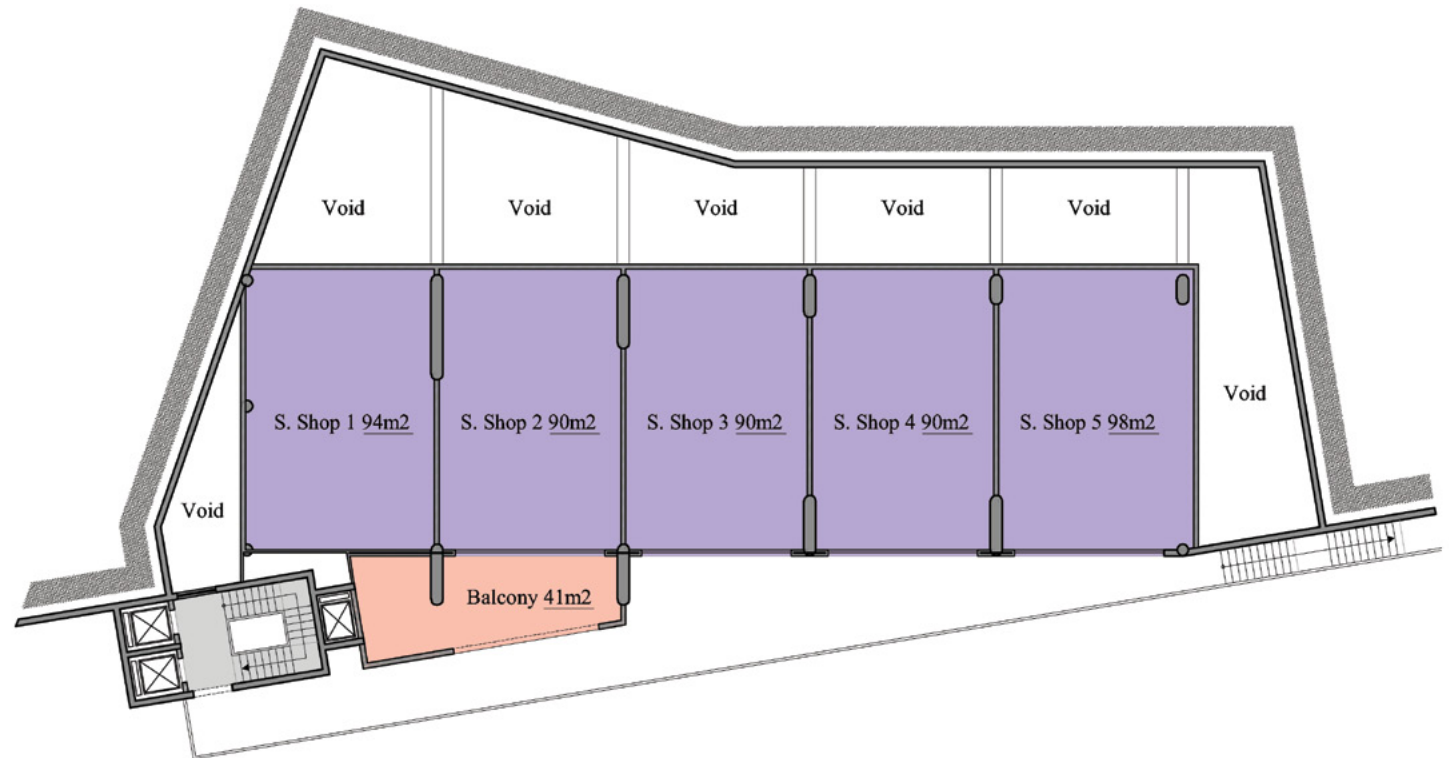
WAREHOUSE

SECOND BASEMENT



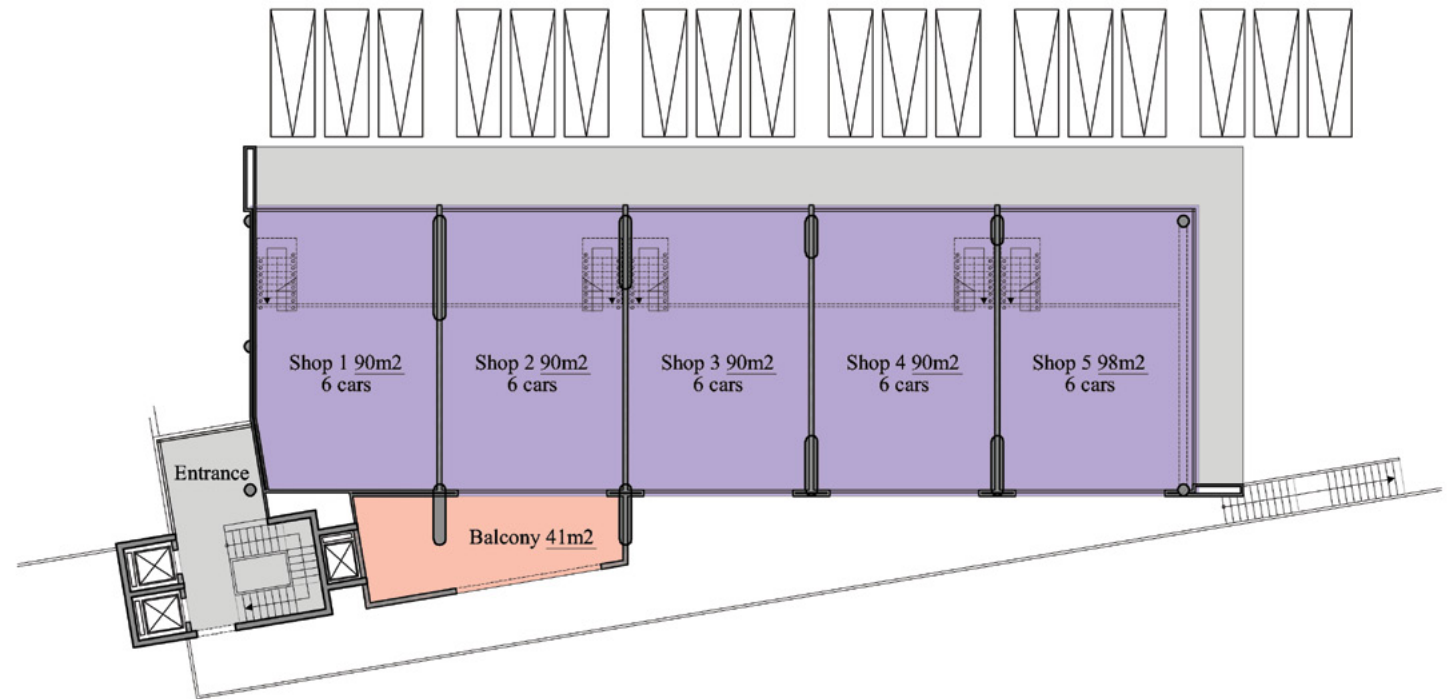
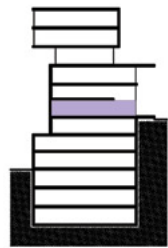
SHOPS

FIRST BASEMENT



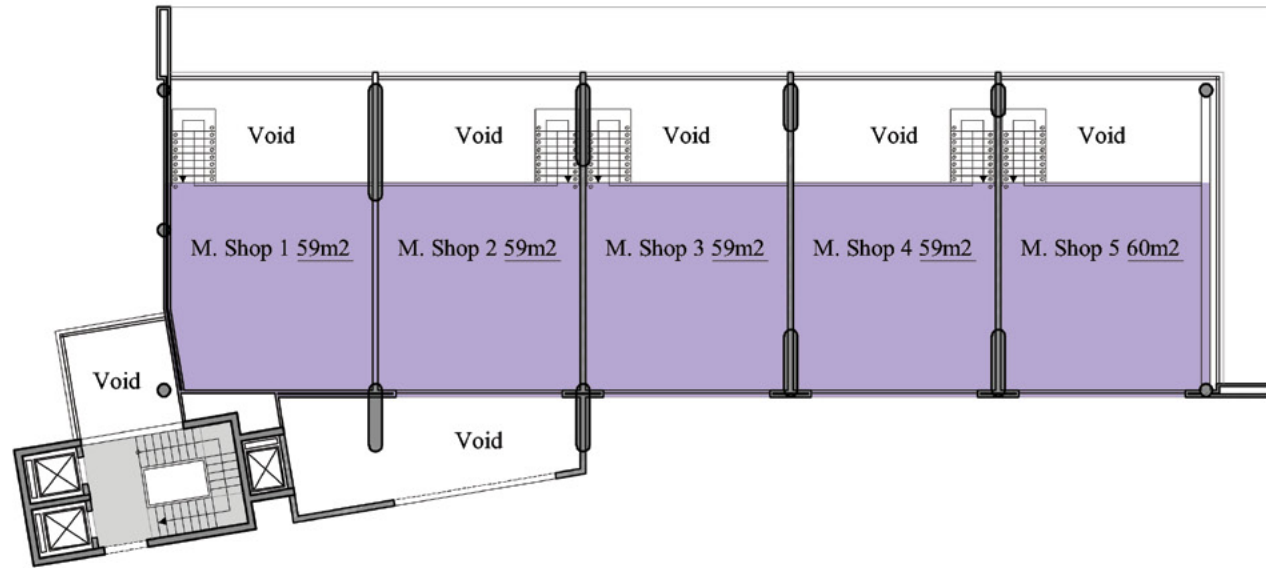
SHOPS

GROUND FLOOR



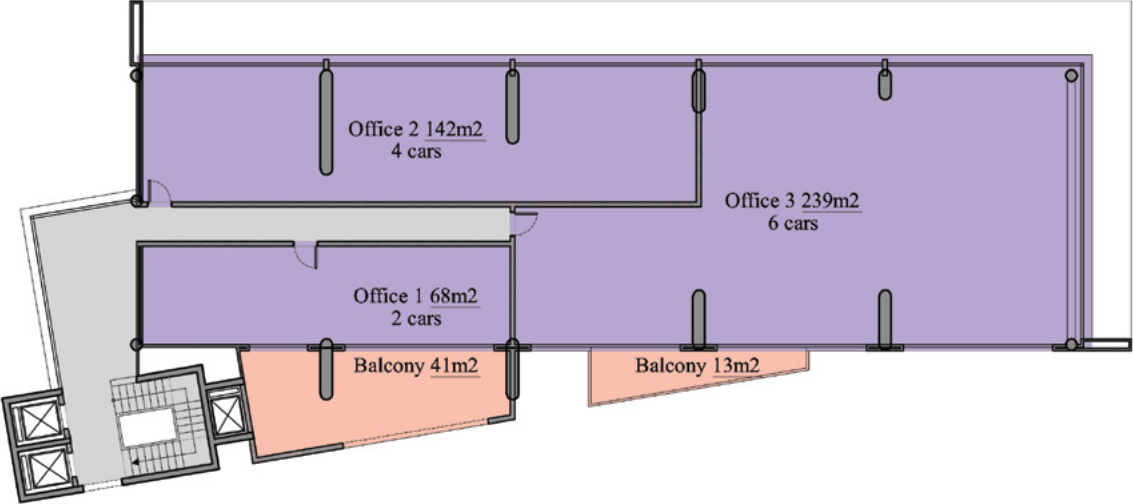
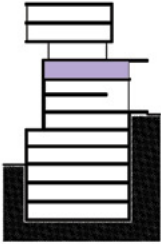
SHOPS

MEZZANINE FLOOR



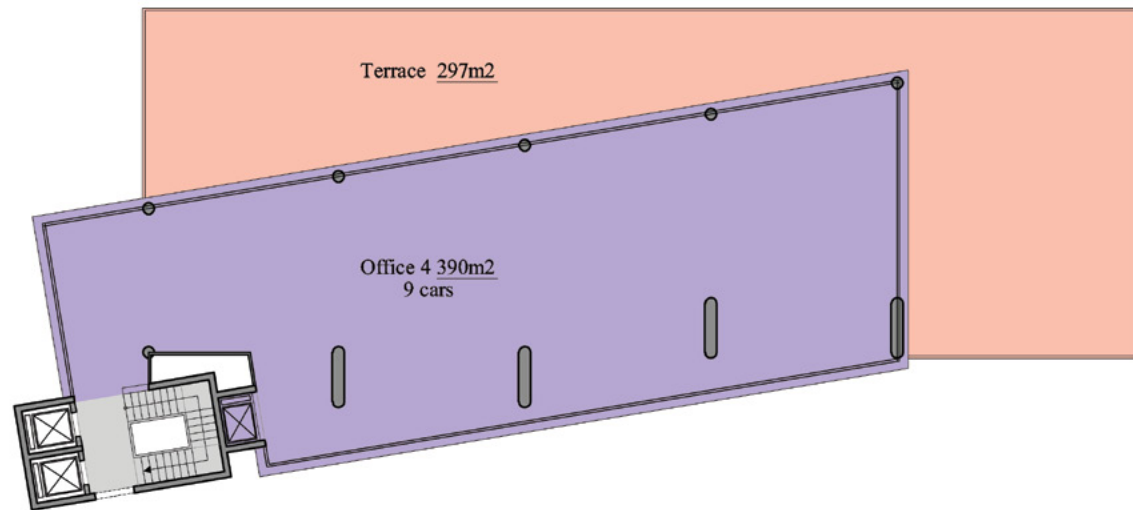
OFFICES

FIRST FLOOR



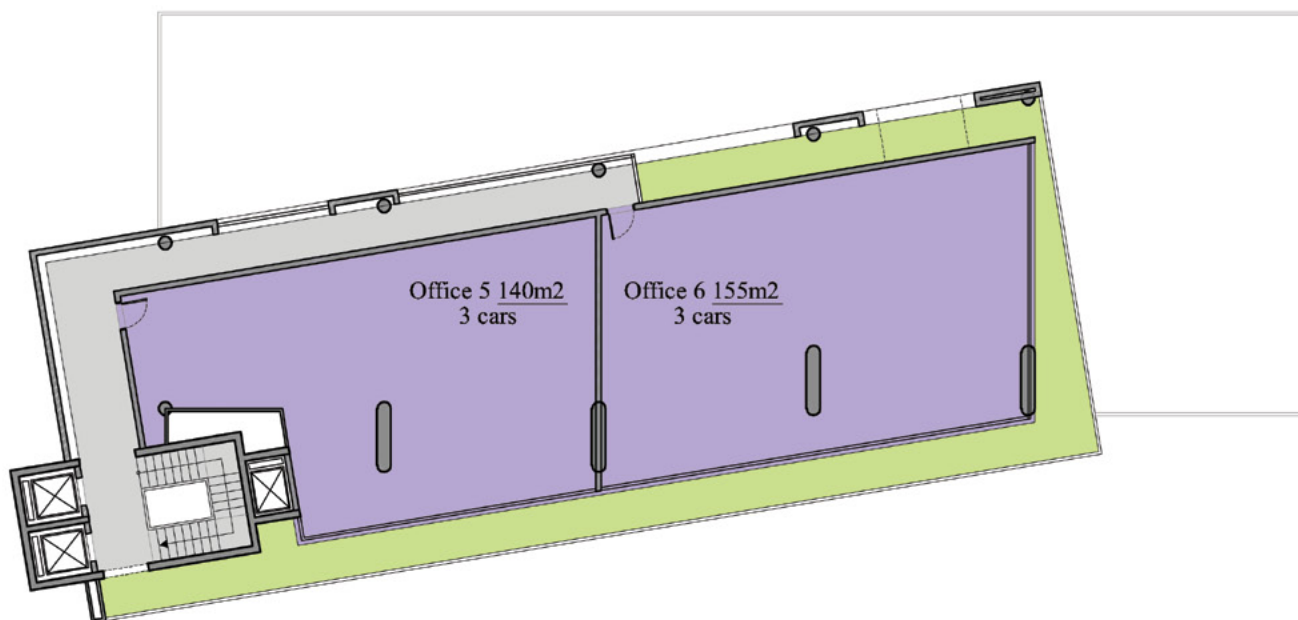
OFFICES & TERRACE

SECOND FLOOR



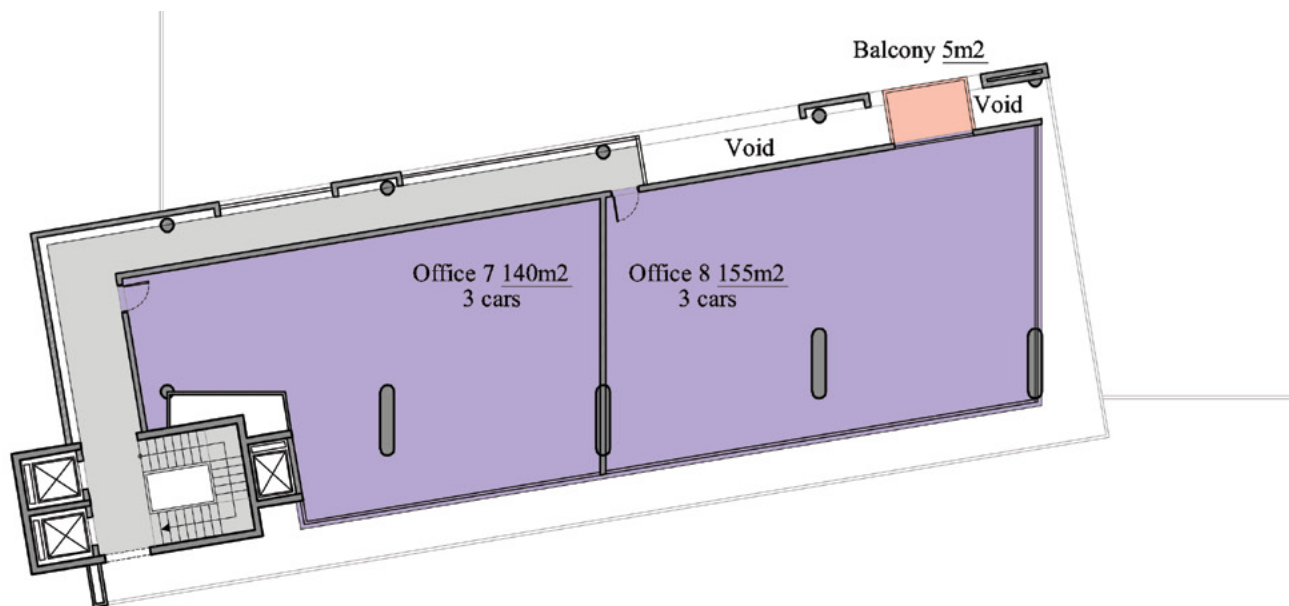
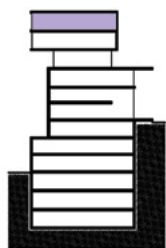
OFFICES

THIRD FLOOR



OFFICES

FOURTH FLOOR





“
FOUNDED ON THE
PROMISE OF TRUST.
”



Address **Byblos Sun Building 3rd Floor, Byblos Main Entrance, Lebanon**
Phone (+961) **9 943 343** | Fax (+961) **9 943 443** | Mobile (+961) **71 988 088** | (+961) **71 988 288**
info@greenyardproperties.com | www.greenyardproperties.com