

SALIBA BUILDING / BYBLOS 405

LUXURY RESIDENTIAL / COMMERCIAL PROJECT



PROJECT BY

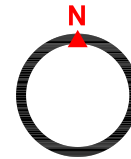
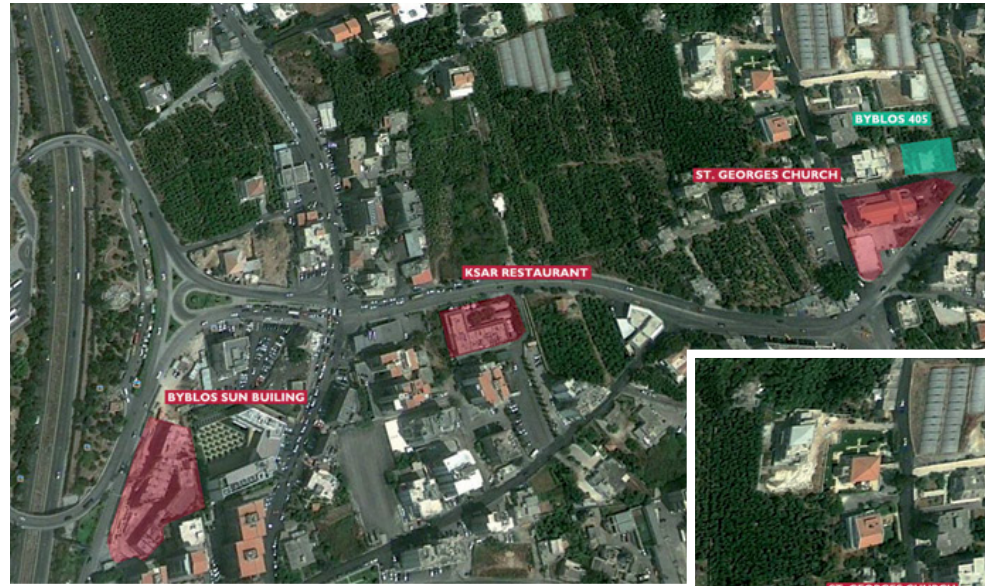


JEAN EL KHOURY
DEVELOPMENT



PROJECT LOCATION

Located in the heart of Byblos's quiet residential area, a few meters away from the busy voie 13, the LEBANESE AMERICAN UNIVERSITY, and the NOTRE DAME DE SECOURS hospital, whatever your needs are and no matter what you are looking for, BYBLOS 405 is the perfect location for you.



OVERALL
WEST PERSPECTIVE



OVERALL
NORTH PERSPECTIVE

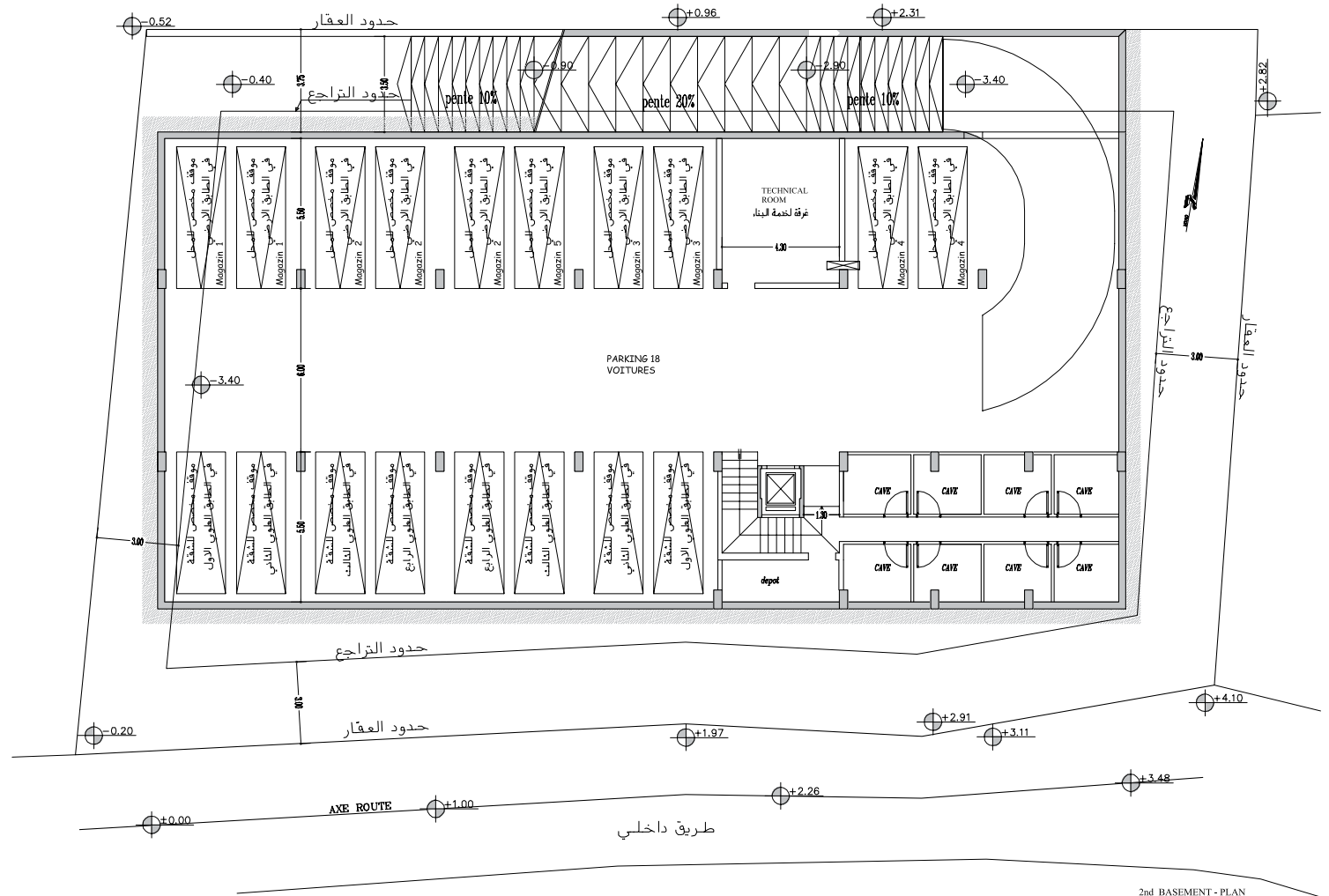
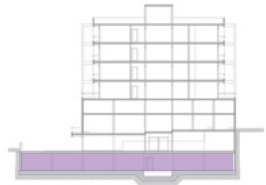


OVERALL
NORTH PERSPECTIVE



BLOCK

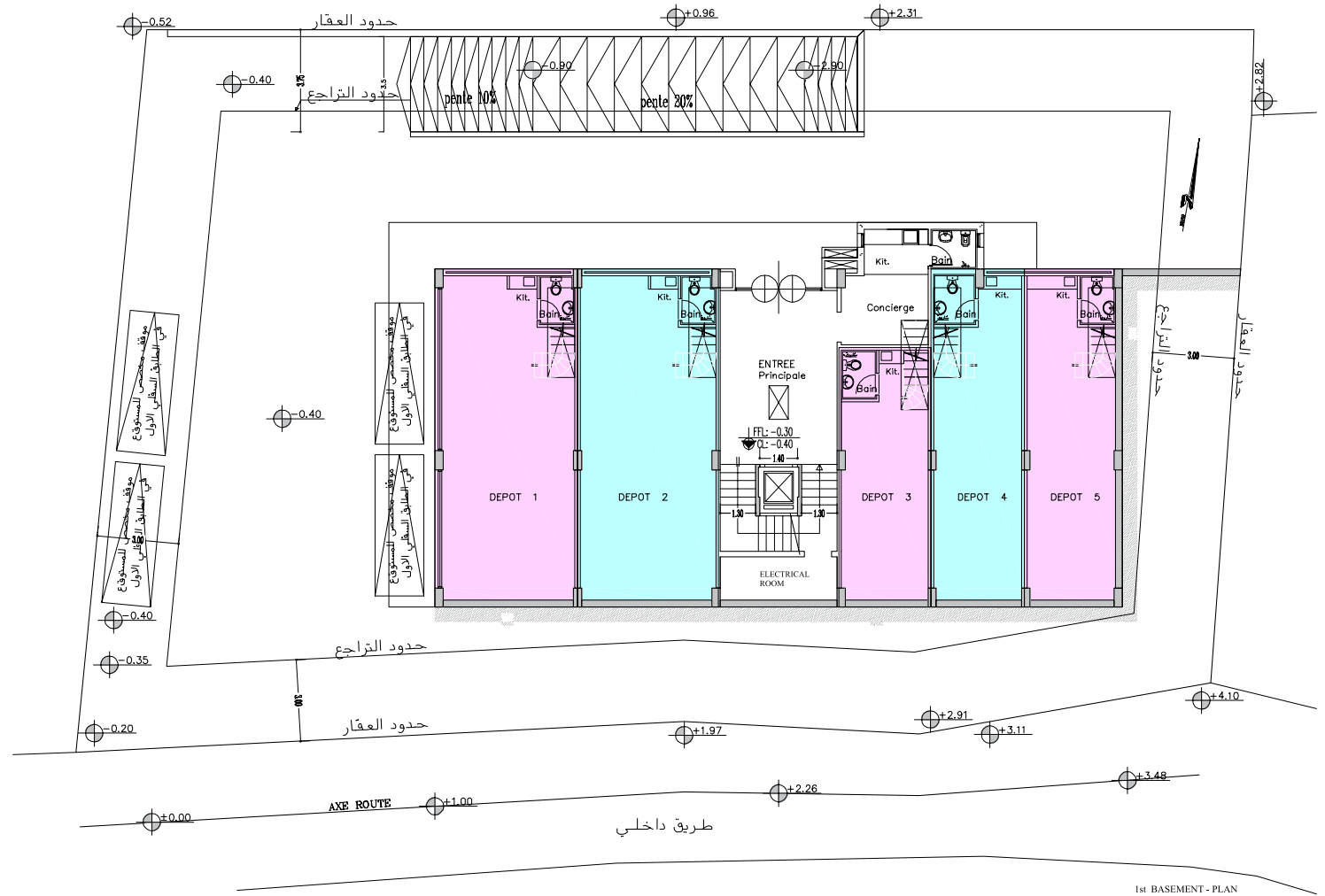
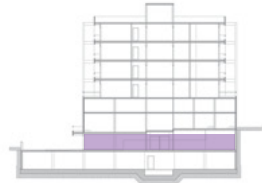
SECOND BASEMENT



2nd BASEMENT - PLAN

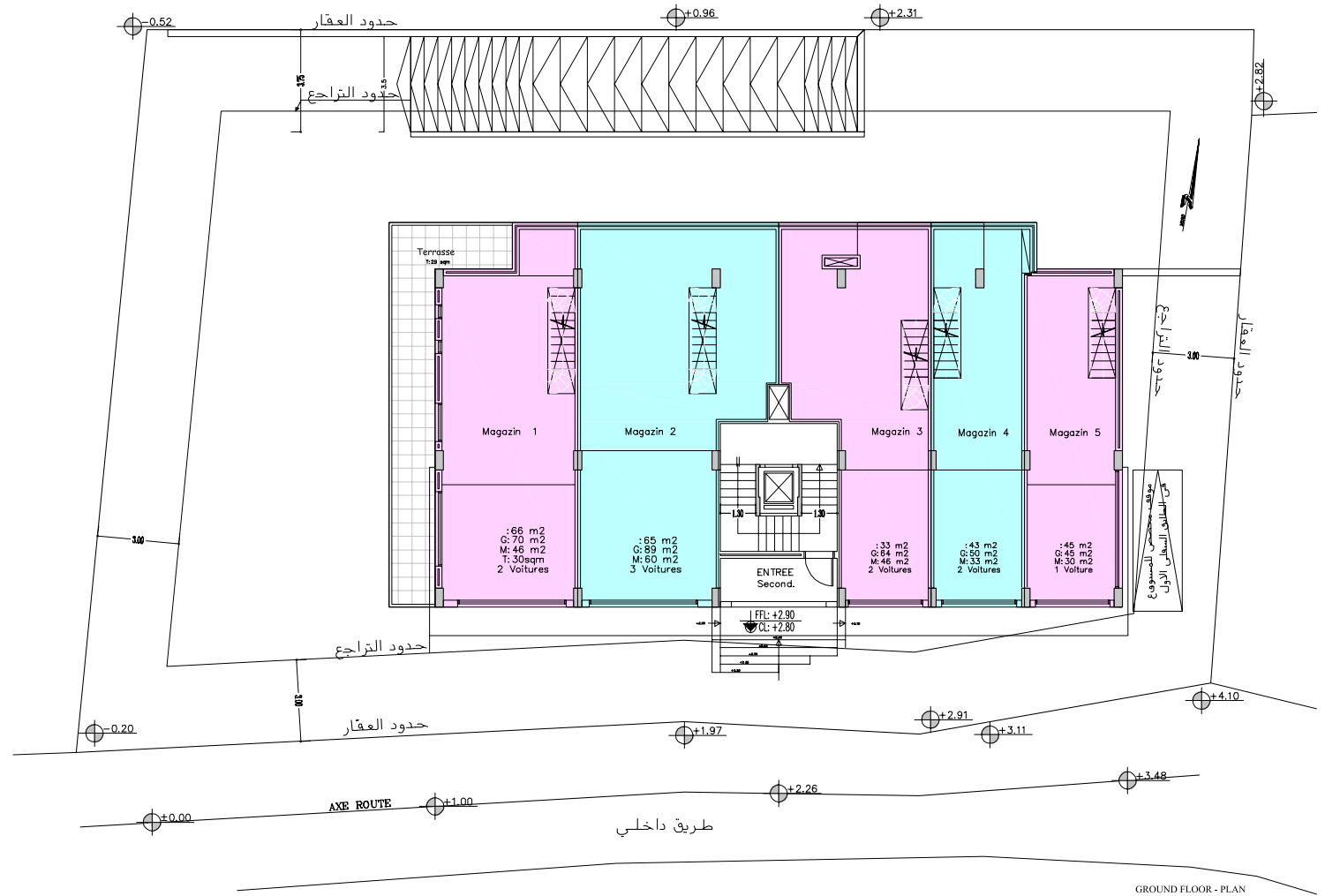
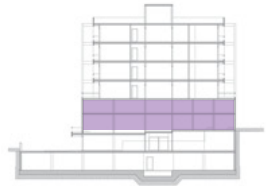
BLOCKA

FIRST BASEMENT



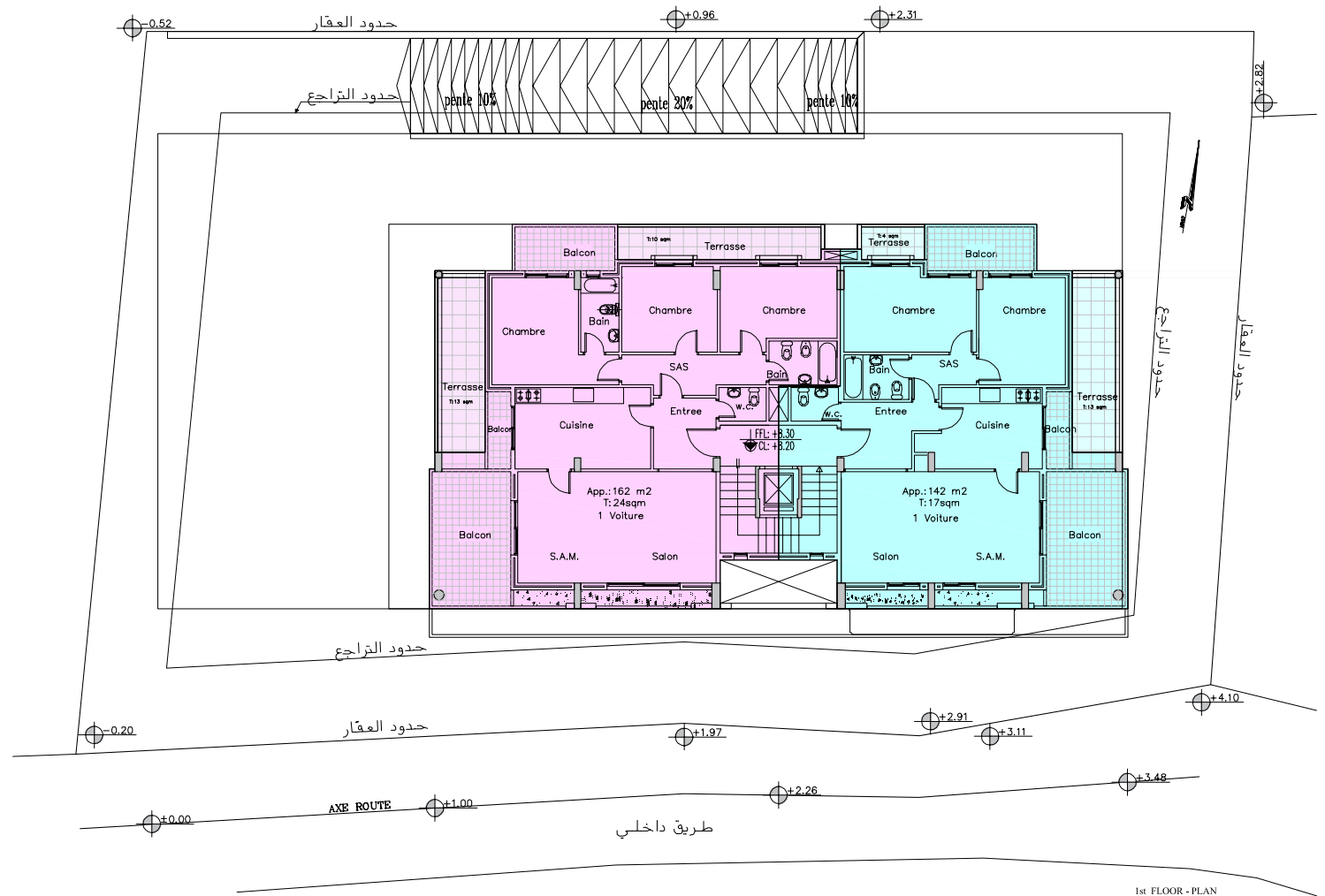
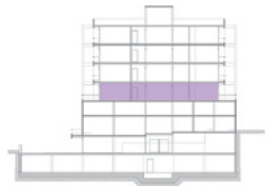
MEZZANINE

GROUND FLOOR



BLOCKA

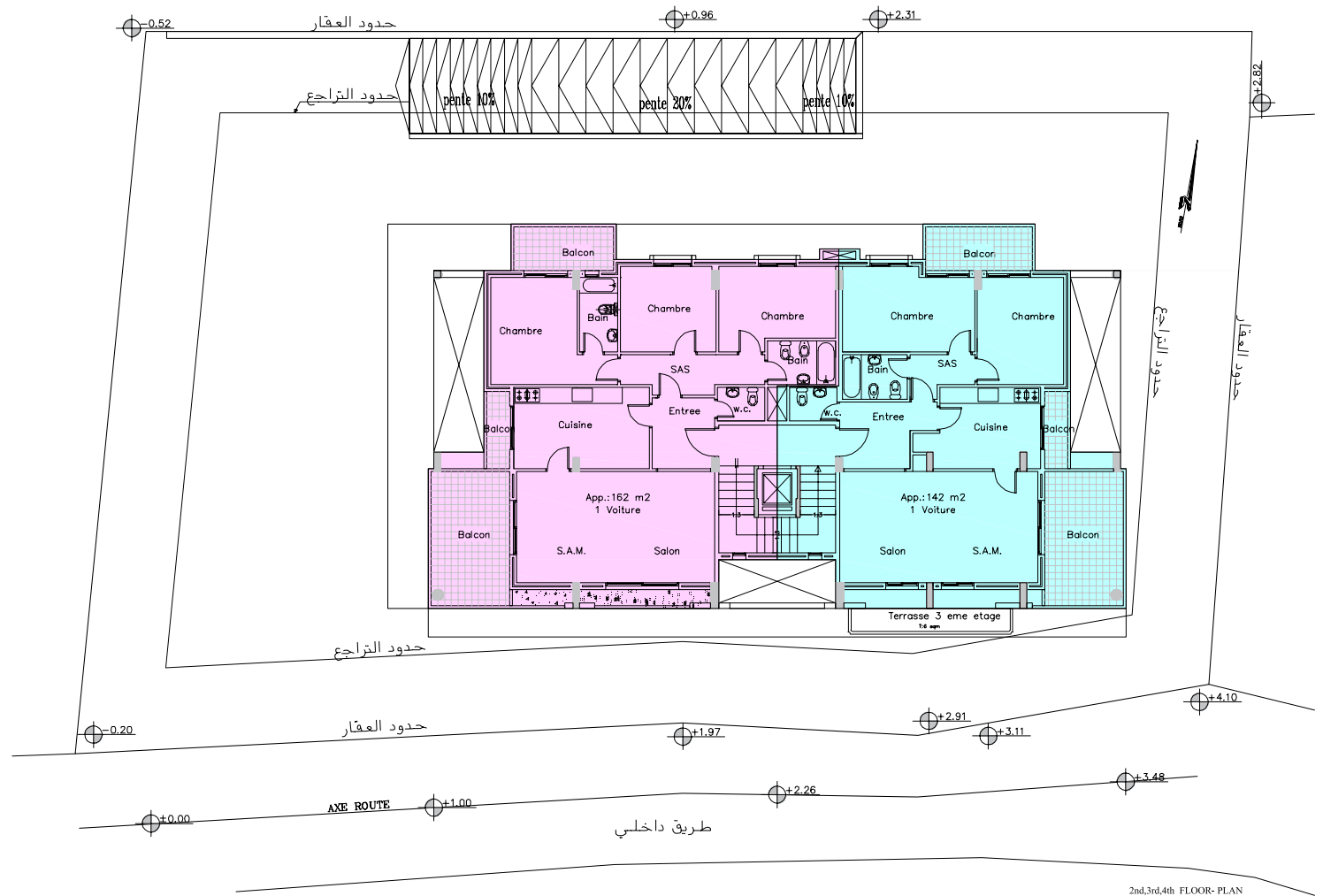
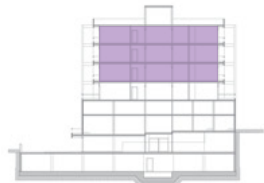
FIRST FLOOR



1st FLOOR - PLAN

BLOCK A

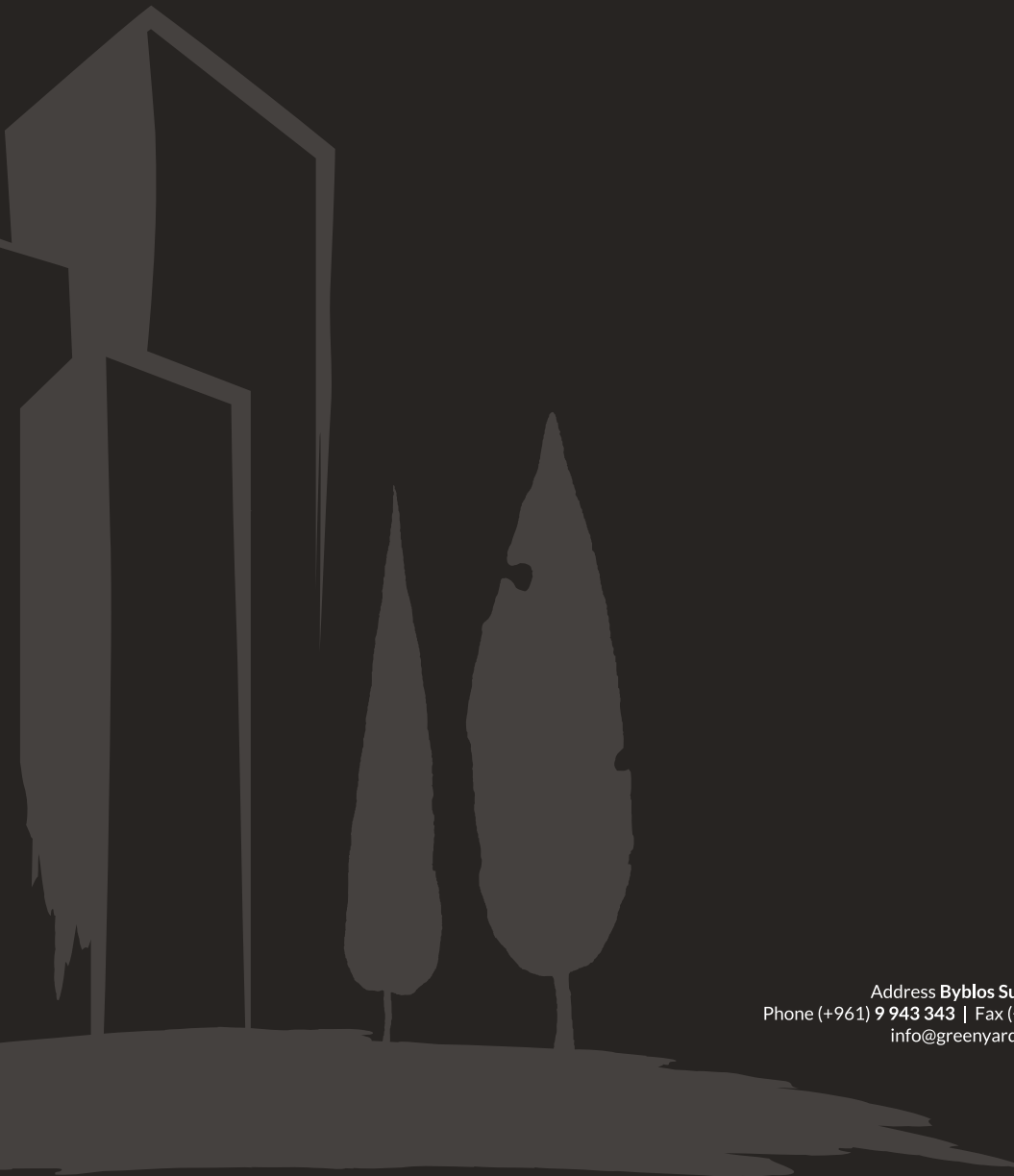
SECOND, THIRD
& FOURTH FLOOR



2nd,3rd,4th FLOOR- PLAN



“
FOUNDED ON THE
PROMISE OF TRUST.
”



Address **Byblos Sun Building 3rd Floor, Byblos Main Entrance, Lebanon**
Phone (+961) 9 943 343 | Fax (+961) 9 943 443 | Mobile (+961) 71 988 088 | (+961) 71 988 288
info@greenyardproperties.com | www.greenyardproperties.com